

Trimless recessed luminaire

Triple Q A25 33W 927 DW
ze11010343



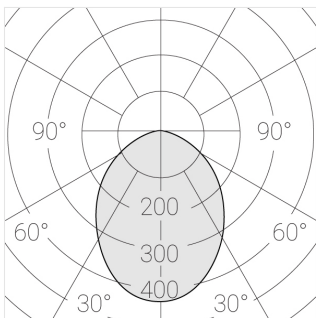
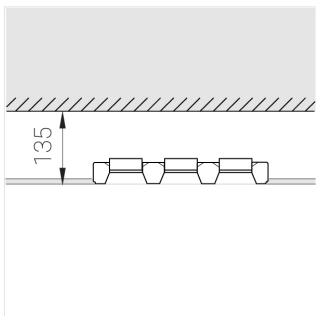
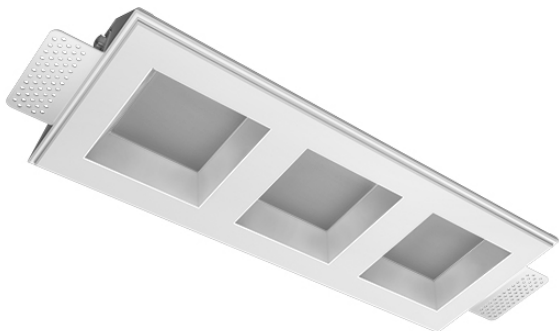
220-240 V



IP20

Ra >90

MAC 3



Complectation

| | |
|--------------------|---|
| Body | 1 |
| LED module | 3 |
| Control gear | 1 |
| Fastener | 2 |
| Screw x6 | 4 |
| Screw self-tapping | 2 |
| Washer D5 | 4 |
| Suction Cup | 1 |

Dimming by TRIAC accessible on request

The manufacturer reserves the right to change the configuration of the LED luminaire.

Specifications

Measurements: 363x137x70 mm

Triple
Body: Gypsum
Illuminant: LED

Electrical safety class: II
Degree of protection: IP20
Rated power: 31.3 W
Luminaire luminous flux*: 2080 lm
Light output*: 69.00 lm/W
Colorful temperature*: 2700 K
Color rendering index*: Ra >90
Color temperature stability*: MAC 3
cos *: 0.96
PRA: LC 45/500-1400/50 bDW SC PRE2

All parameters marked with * are calculated values.
Zenith uses tried and tested components from leading suppliers.
However, it is possible for some LED technology-related faults to occur over the life of the product.

** — the manufacturer reserves the right to replace the power supply with a similar one with the same characteristics.