

# Trimless recessed luminaire

Tetro Q A25 44W 940

ze11010485



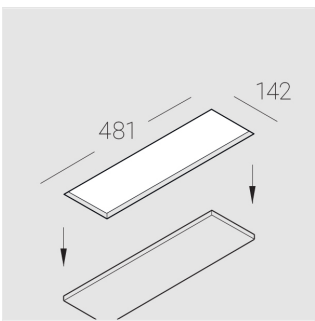
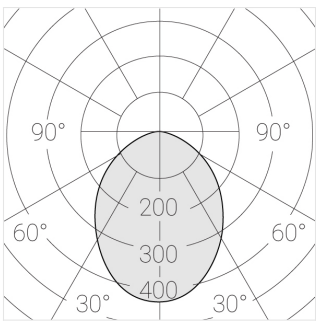
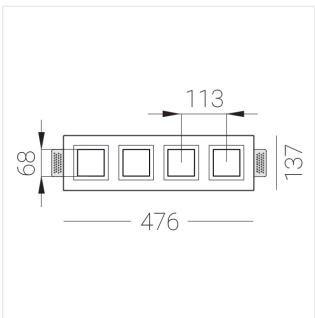
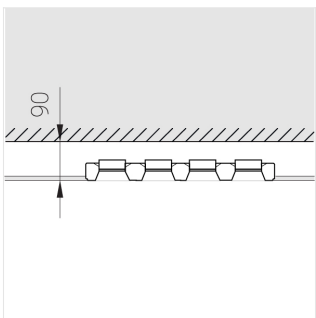
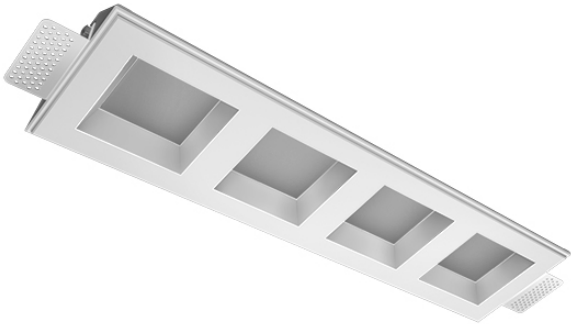
220-240 V



IP20

Ra >90

MAC 3



## Complectation

Body	1
LED module	4
Conrol gear	4
Fastener	2
Screw x6	4
Screw self-tapping	2
Washer D5	4
Suction Cup	1

Dimming by TRIAC accessible on request

The manufacturer reserves the right to change the configuration of the LED luminaire.

## Specifications

Measurements: 475x137x70 mm

Quadruple  
Body: Gypsum  
Illuminant: LED

Electrical safety class: II  
Degree of protection: IP20  
Rated power: 44.8 w  
Luminaire luminous flux\*: 3256 lm  
Light output\*: 74.00 lm/w  
Colorful temperature\*: 4000 K  
Color rendering index\*: Ra >90  
Color temperature stability\*: MAC 3  
cos \*: 0.5  
PRA: Mean Well APC-12-350

All parameters marked with \* are calculated values.  
Zenith uses tried and tested components from leading suppliers.  
However, it is possible for some LED technology-related faults to occur over the life of the product.

\*\* — the manufacturer reserves the right to replace the power supply with a similar one with the same characteristics.