

# Trimless recessed luminaire

Tetro Q A25 44W 830 IP44/20  
ze11010486



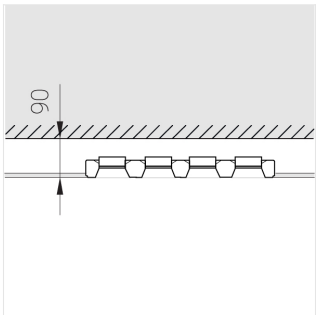
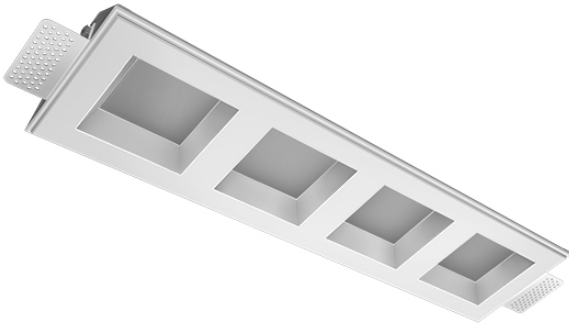
220-240 V



IP44

Ra >80

MAC 3



## Complectation

|                    |   |
|--------------------|---|
| Body               | 1 |
| LED module         | 4 |
| Conrol gear        | 4 |
| Fastener           | 2 |
| Screw x6           | 4 |
| Screw self-tapping | 2 |
| Washer D5          | 4 |
| Suction Cup        | 1 |

Dimming by TRIAC accessible on request

The manufacturer reserves the right to change the configuration of the LED luminaire.

## Specifications

Measurements: 475x137x70 mm

Quadruple  
Body: Gypsum  
Illuminant: LED

Electrical safety class: II  
Degree of protection: IP44  
Rated power: 44.8 w  
Luminaire luminous flux\*: 3499 lm  
Light output\*: 80.00 lm/w  
Colorful temperature\*: 3000 K  
Color rendering index\*: Ra >80  
Color temperature stability\*: MAC 3  
cos \*: 0.5  
PRA: Mean Well APC-12-350

All parameters marked with \* are calculated values.  
Zenith uses tried and tested components from leading suppliers.  
However, it is possible for some LED technology-related faults to occur over the life of the product.

\*\* — the manufacturer reserves the right to replace the power supply with a similar one with the same characteristics.