

Trimless recessed luminaire

Simple Round A56 D68 8W 930 IP44/20 DA
ze11007207



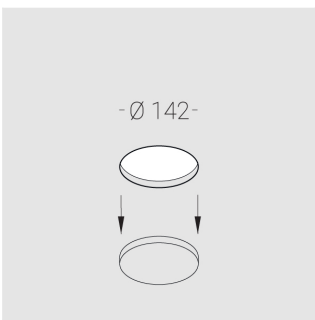
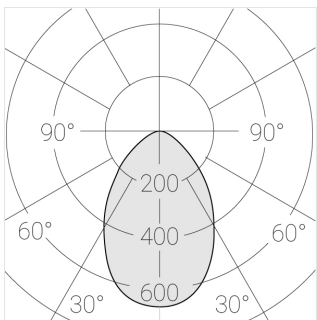
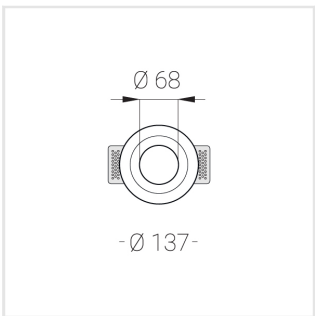
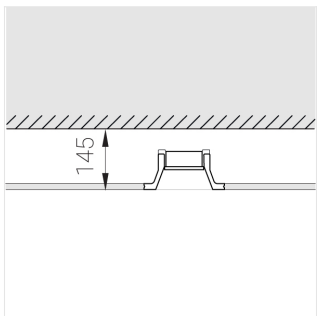
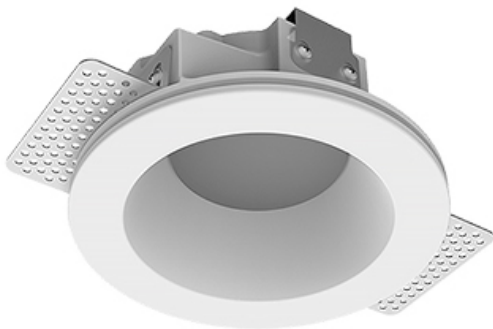
220-240 V



IP44

Ra >90

MAC 3



Complectation

Body	1
LED module	1
Control gear	1
Fastener	2
Screw x6	4
Screw self-tapping	2
Washer D5	4
Suction Cup	1

Dimming by TRIAC accessible on request

The manufacturer reserves the right to change the configuration of the LED luminaire.

Specifications

Measurements:	D137x96 mm
Net weight:	0.75 kg
Round	
Body:	Gypsum
Illuminant:	LED
Electrical safety class:	II
Degree of protection:	IP44
Rated power:	8.1 w
Luminaire luminous flux*:	513 lm
Light output*:	63.00 lm/w
Colorful temperature*:	3000 K
Color rendering index*:	Ra >90
Color temperature stability*:	MAC 3
cos *:	0.95
PRA:	LCA 10W 150-400mA one4all SC PRE

All parameters marked with * are calculated values.
Zenit uses tried and tested components from leading suppliers.
However, it is possible for some LED technology-related faults to occur over the life of the product.
** — the manufacturer reserves the right to replace the power supply with a similar one with the same characteristics.