

# Trimless recessed luminaire

Simple Quadro A56 100x100 17W 830 IP44  
ze11005012



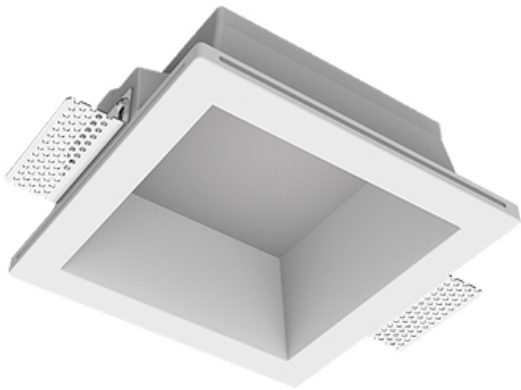
220-240 V



IP44

Ra >80

MAC 3



## Complectation

Body	1
LED module	1
Control gear	1
Fastener	2
Screw x6	4
Screw self-tapping	2
Washer D5	4

Dimming by TRIAC accessible on request

The manufacturer reserves the right to change the configuration of the LED luminaire.

## Specifications

Measurements:	180x180x96 mm
Net weight:	1.48 kg

Square	
Body:	Gypsum
Illuminant:	LED

Electrical safety class:	II
Degree of protection:	IP44
Rated power:	16.8 w
Luminaire luminous flux*:	1525 lm
Light output*:	91 lm/w
Colorful temperature*:	3000 K
Color rendering index*:	Ra >80
Color temperature stability*:	MAC 3
cos *:	0.55
PRA:	LC 15/350/43 fixC SC SNC2

All parameters marked with \* are calculated values.  
Zenith uses tried and tested components from leading suppliers.  
However, it is possible for some LED technology-related faults to occur over the life of the product.  
\*\* — the manufacturer reserves the right to replace the power supply with a similar one with the same characteristics.