

Trimless recessed luminaire

Luno Round C85 D200 20W 830 IP44

ze11008731

zenit



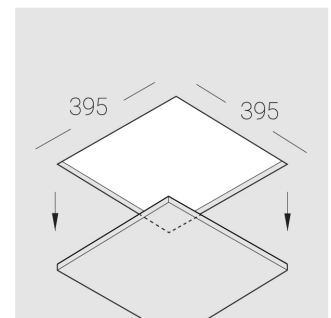
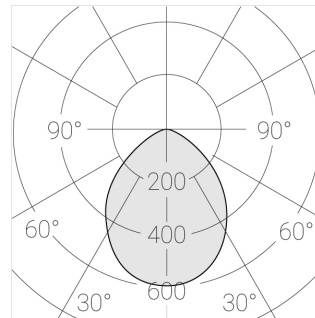
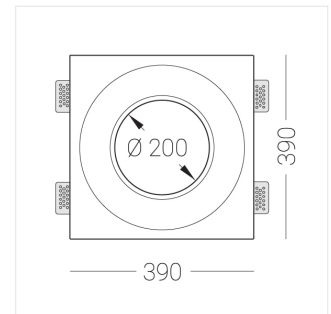
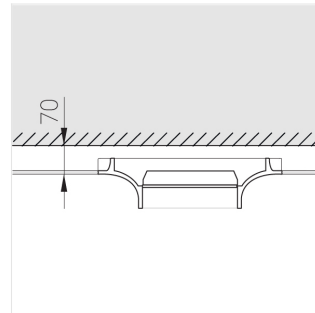
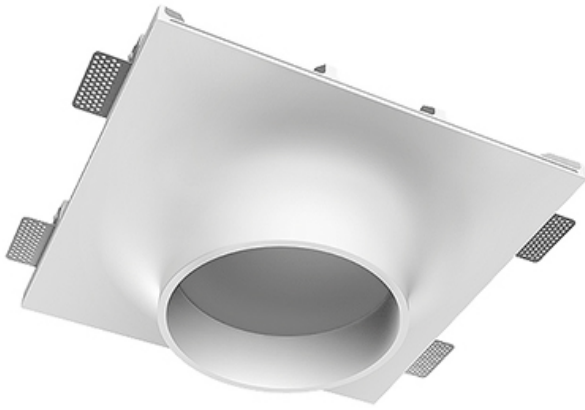
220-240 V



IP44

Ra >80

MAC 3



Complectation

| | |
|--------------------|---|
| Body | 1 |
| LED module | 1 |
| Control gear | 1 |
| Fastener | 4 |
| Screw x6 | 8 |
| Screw self-tapping | 4 |
| Washer D5 | 8 |

Dimming by TRIAC accessible on request

The manufacturer reserves the right to change the configuration of the LED luminaire.

Specifications

| | |
|---------------|----------------|
| Measurements: | 390x390x123 mm |
| Net weight: | 4.38 kg |

| | |
|-------------|--------|
| Round | |
| Body: | Gypsum |
| Illuminant: | LED |

| | |
|-------------------------------|---------------------------|
| Electrical safety class: | II |
| Degree of protection: | IP44 |
| Rated power: | 19.6 W |
| Luminaire luminous flux*: | 1825 lm |
| Light output*: | 93.00 lm/W |
| Colorful temperature*: | 3000 K |
| Color rendering index*: | Ra >80 |
| Color temperature stability*: | MAC 3 |
| cos *: | 0.93 |
| PRA: | LC 21/500/42 fixC SR ADV2 |

All parameters marked with * are calculated values.
Zenith uses tried and tested components from leading suppliers.
However, it is possible for some LED technology-related faults to occur over the life of the product.

** — the manufacturer reserves the right to replace the power supply with a similar one with the same characteristics.