

Trimless recessed luminaire

Zenith

Tetro Q A25 32W 930

ze11010424



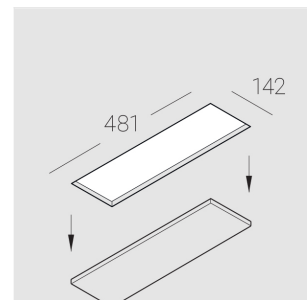
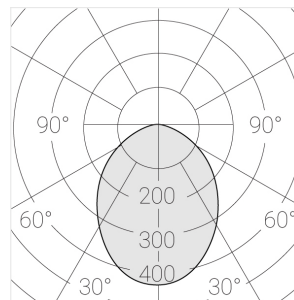
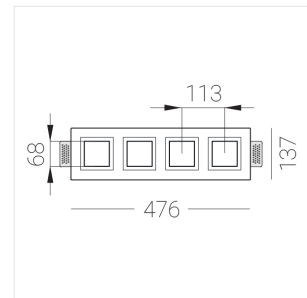
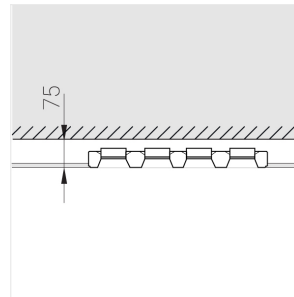
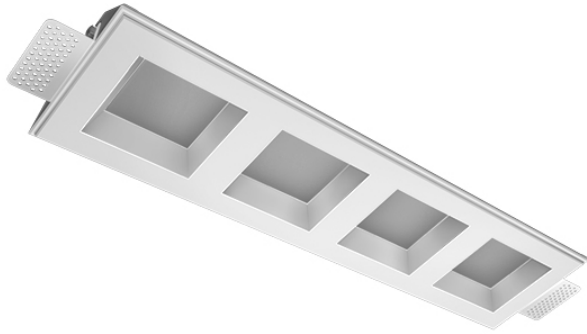
220-240 V



IP20

Ra >90

MAC 3



Complectation

Body	1
LED module	4
Control gear	4
Fastener	2
Screw x6	4
Screw self-tapping	2
Washer D5	4
Suction Cup	1

Dimming by TRIAC accessible on request

Specifications

Measurements: 475x137x70 mm

Quadruple

Body:

Gypsum

Illuminant:

LED

Electrical safety class:

II

Degree of protection:

IP20

Rated power:

31.2 W

Luminaire luminous flux*:

2204 lm

Light output*:

73 lm/W

Colorful temperature*:

3000 K

Color rendering index*:

Ra >90

Color temperature stability*:

MAC 3

cos *:

0.4

PRA:

Mean Well APC-8-250

All parameters marked with * are calculated values. Zenith uses tried and tested components from leading suppliers. However, it is possible for some LED technology-related faults to occur over the life of the product.