

Trimless recessed luminaire

Tetro Q A25 32W 840 IP44/20
ze11010427



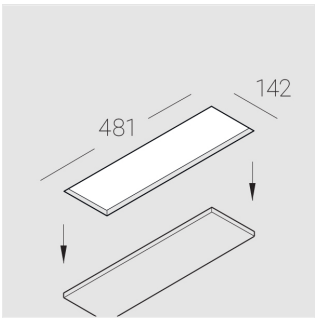
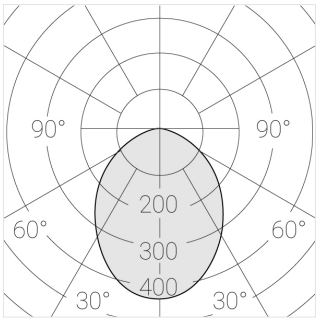
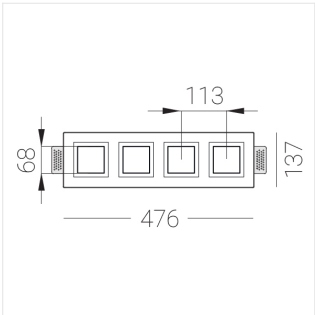
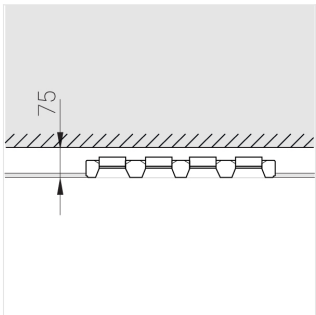
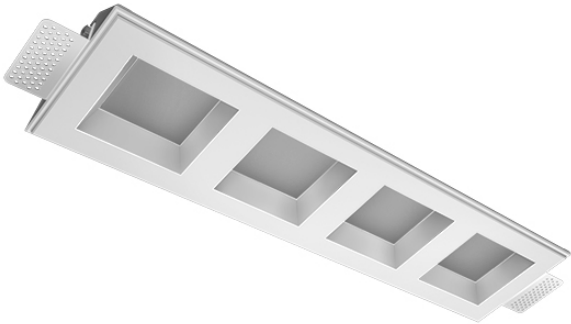
220-240 V



IP44

Ra >80

MAC 3



Complectation

Body	1
LED module	4
Conrol gear	4
Fastener	2
Screw x6	4
Screw self-tapping	2
Washer D5	4
Suction Cup	1

Dimming by TRIAC accessible on request

The manufacturer reserves the right to change the configuration of the LED luminaire.

Specifications

Measurements: 475x137x70 mm

Quadruple
Body: Gypsum
Illuminant: LED

Electrical safety class: II
Degree of protection: IP44
Rated power: 31.2 w
Luminaire luminous flux*: 2753 lm
Light output*: 91.00 lm/w
Colorful temperature*: 4000 K
Color rendering index*: Ra >80
Color temperature stability*: MAC 3
cos *: 0.4
PRA: Mean Well APC-8-250

All parameters marked with * are calculated values.
Zenith uses tried and tested components from leading suppliers.
However, it is possible for some LED technology-related faults to occur over the life of the product.

** — the manufacturer reserves the right to replace the power supply with a similar one with the same characteristics.