

Trimless recessed luminaire

Tetro Q A25 44W 830 IP44/20 DA
ze11010501



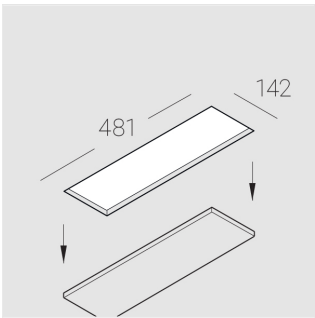
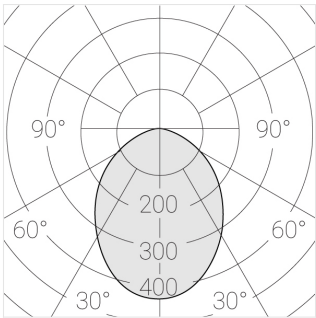
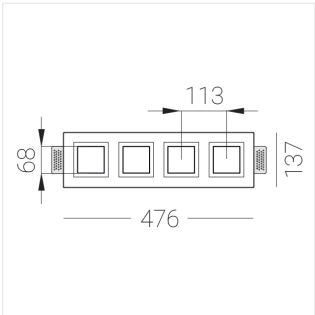
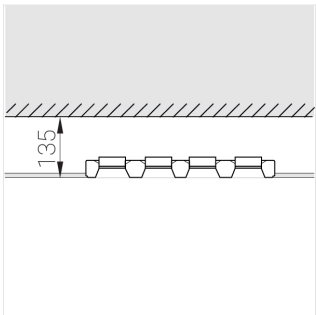
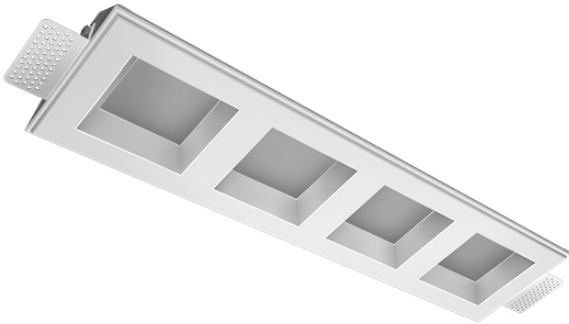
220-240 V



IP44

Ra >80

MAC 3



Complectation

| | |
|--------------------|---|
| Body | 1 |
| LED module | 4 |
| Conrol gear | 1 |
| Fastener | 2 |
| Screw x6 | 4 |
| Screw self-tapping | 2 |
| Washer D5 | 4 |
| Suction Cup | 1 |

Dimming by TRIAC accessible on request

The manufacturer reserves the right to change the configuration of the LED luminaire.

Specifications

Measurements: 475x137x70 mm

Quadruple
Body: Gypsum
Illuminant: LED

Electrical safety class: II
Degree of protection: IP44
Rated power: 41.5 w
Luminaire luminous flux*: 3499 lm
Light output*: 87 lm/w
Colorful temperature*: 3000 K
Color rendering index*: Ra >80
Color temperature stability*: MAC 3
cos *: 0.97
PRA: LCA 45W 500-1400mA one4all SC PRE

All parameters marked with * are calculated values.
Zenith uses tried and tested components from leading suppliers.
However, it is possible for some LED technology-related faults to occur over the life of the product.

** — the manufacturer reserves the right to replace the power supply with a similar one with the same characteristics.