

Trimless recessed luminaire

Tetro Q A25 32W 930 IP44/20 DW
ze11010449



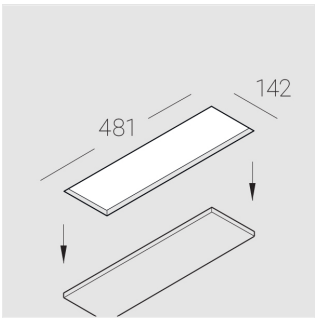
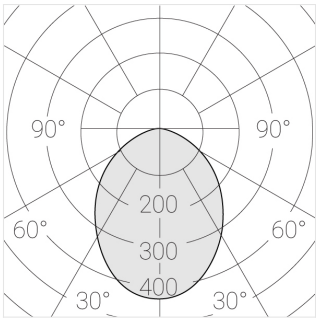
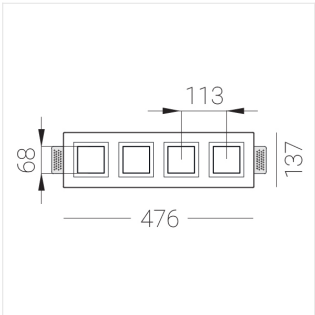
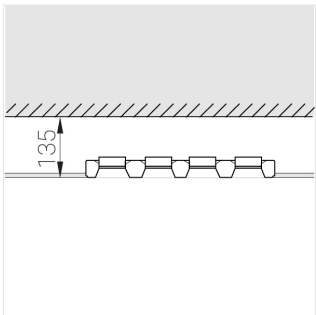
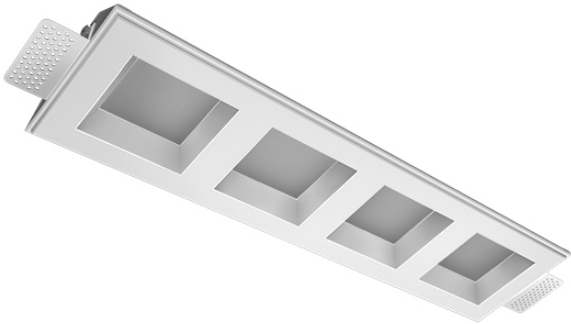
220-240 V



IP44

Ra >90

MAC 3



Complectation

Body	1
LED module	4
Control gear	1
Fastener	2
Screw x6	4
Screw self-tapping	2
Washer D5	4
Suction Cup	1

Dimming by TRIAC accessible on request

The manufacturer reserves the right to change the configuration of the LED luminaire.

Specifications

Measurements: 475x137x70 mm

Quadruple
Body: Gypsum
Illuminant: LED

Electrical safety class: II
Degree of protection: IP44
Rated power: 29.1 W
Luminaire luminous flux*: 2204 lm
Light output*: 78 lm/W
Colorful temperature*: 3000 K
Color rendering index*: Ra >90
Color temperature stability*: MAC 3
cos *: 0.95
PRA: LCA 45W 500-1400mA one4all SC PRE

All parameters marked with * are calculated values.
Zenith uses tried and tested components from leading suppliers.
However, it is possible for some LED technology-related faults to occur over the life of the product.

** — the manufacturer reserves the right to replace the power supply with a similar one with the same characteristics.